



SpaceCube On-Board SAR Data Processing Results

Tom Flatley – Branch Head
NASA/GSFC Science Data Processing Branch

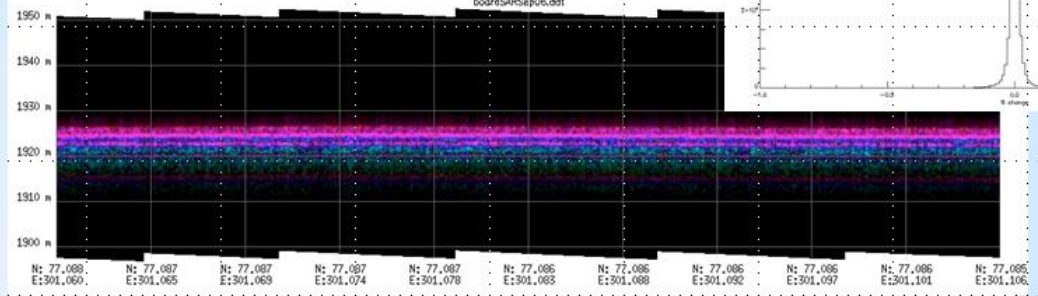
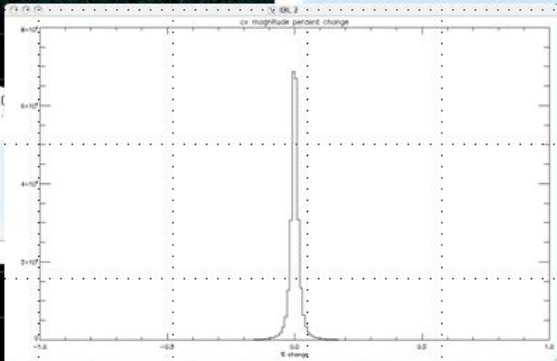
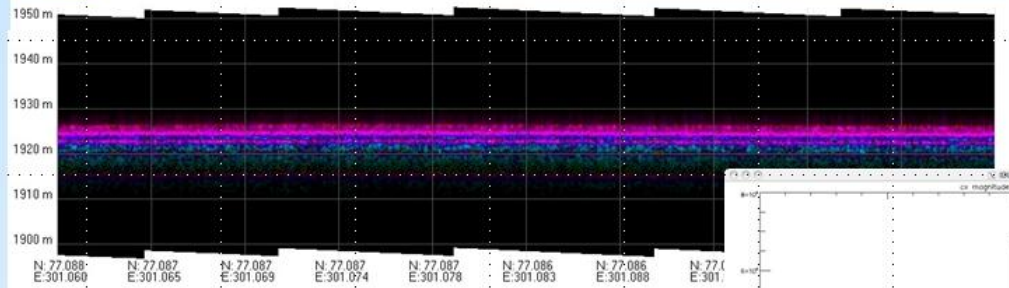


On-Board Data Reduction



Accomplishments

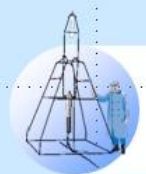
SAR Nadir
Altimetry
Results (FY07)



On-board processing yields lossless 6:1 data volume reduction

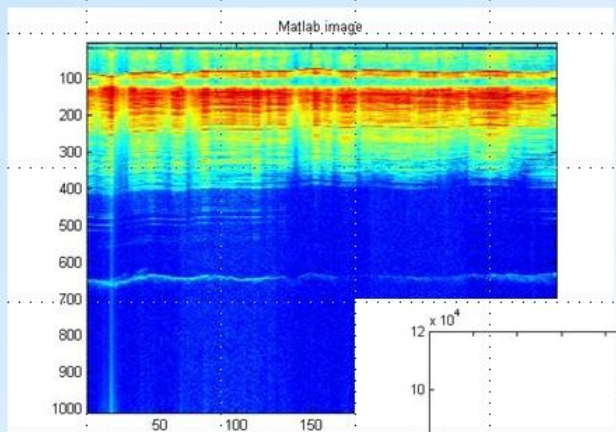


On-Board Data Reduction



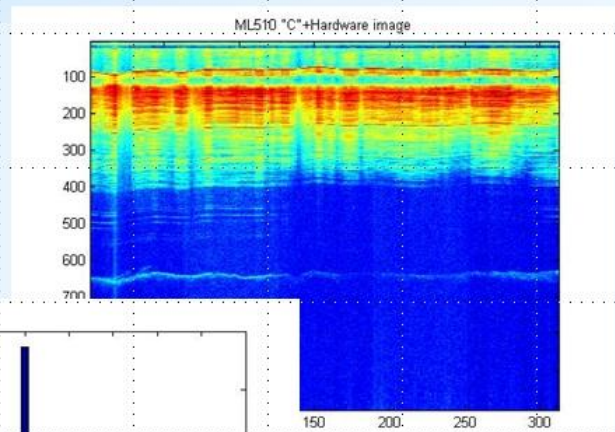
Accomplishments

SAR Mapping Results (FY09)



Original Matlab Output

On-board product generation yields factor of 165x data volume reduction



SpaceCube Output

Difference < 1%

